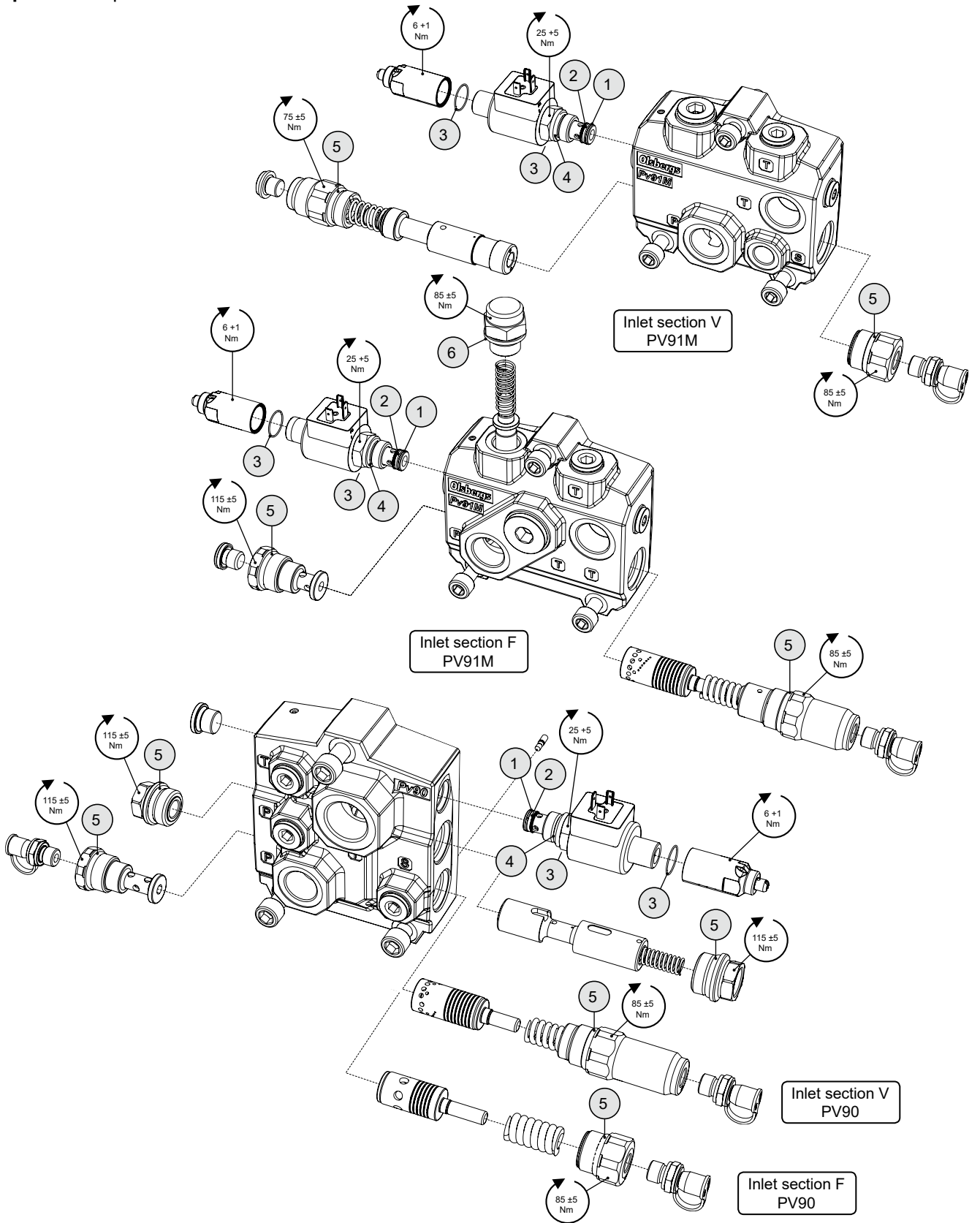


Sealing package TG2

Fits: Inlet section F Pv91M, V Pv91M, F Pv90, V Pv90

Consumption: 1 kit per inlet section



Contains

-
- 2 x Back-up ring Ø 11,7
 1 x O-ring Ø 11
 2 x O-ring Ø 17x1
 1 x O-ring Ø 17x2
 4 x O-ring Ø 23,47
 1 x Sealing washer tredo G 1/2"