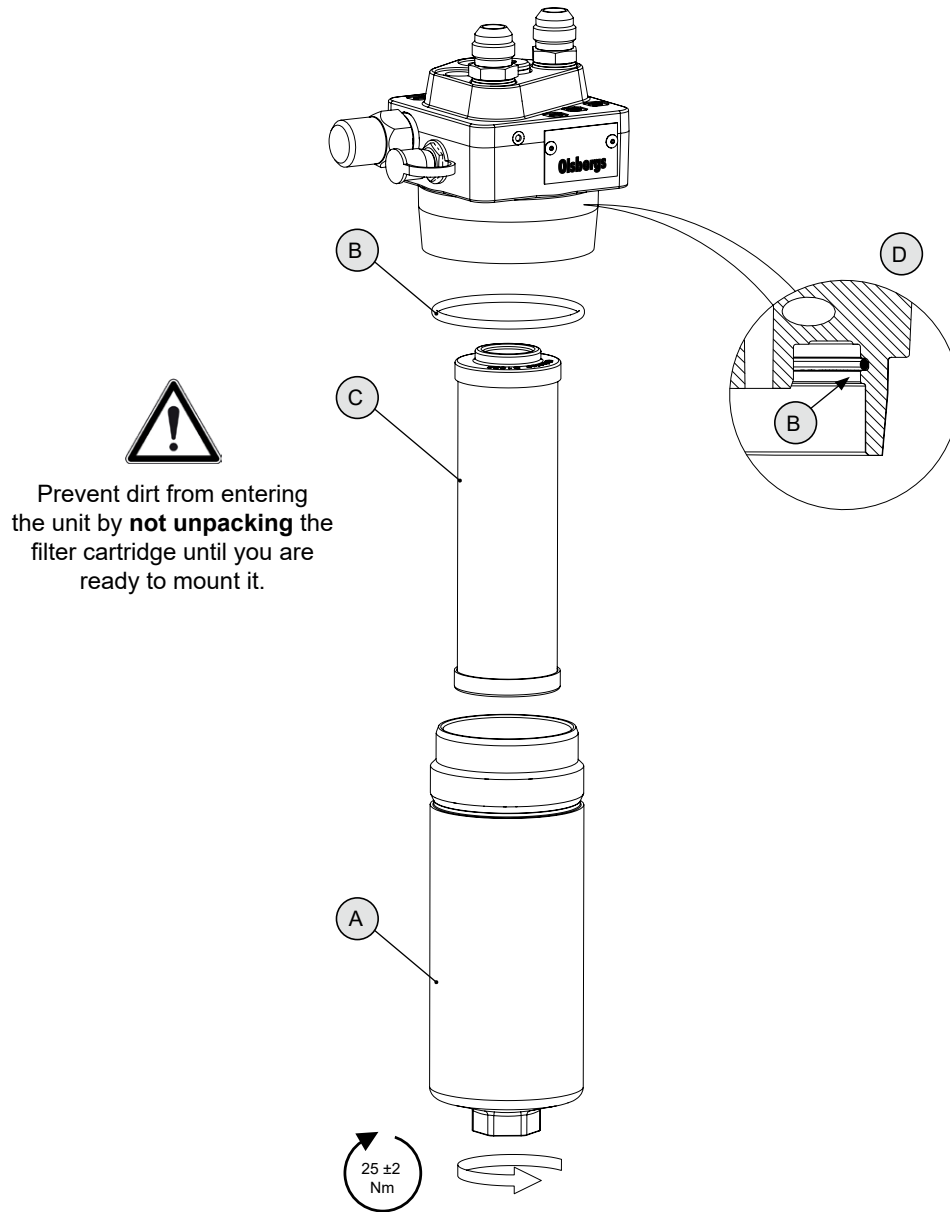


Filter cartridge

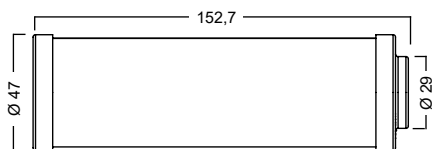
Fits: Pressure reducer / filter PRF

Consumption: 1 filter per PRF unit

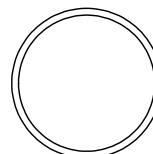


1. Carefully clean the filter cover (A) and the area (D) on the housing.
2. Remove the filter cover (A) using a 27mm wrench.
3. Remove the old o-ring (B) and replace it with the supplied one (oil it before assembly).
4. Remove the old filter cartridge (C).
5. Unpack the new filter cartridge, make sure it's clean and mount it.
6. Remount the filter cover and tighten it, torque 25 ± 2 Nm.

Contains



1 x Filter cartridge



1 x O-ring Ø62,5

Filter cartridge